

**Department of Counselor Education**

**M.S.Ed. in Counseling  
School Counseling Option**

**Annual Assessment Report of Student Progress for Teacher Education Programs**

**2011-2012  
Academic Year**

**Overview of the Counselor Education Assessment Plan**

The Department of Counselor Education's Six-Step Assessment Plan associated with the School Counseling option incorporates the following six elements: 1) program information, 2) faculty chart, 3) SPO learning outcomes for the program, 4) measurement of learning outcomes, 5) description of results, and 6) feedback on changes planned (or already implemented) in reaction to the 2010-2011 assessment of student learning data.

**1. Program Information**

## 2. Faculty Chart

Name	License Type	Expiration Date
Carrie Alexander-Albritton Assistant Professor	Licensed Professional Counselor (Idaho)	11/22/2012
	National Certified Counselor	11/15/2015
	Certified Alcohol and Other Drug Counselor	01/10/2013
William McFarland Professor	National Certified Counselor	10/31/2014
Rebecca Newgent Professor and Chairperson	Licensed Clinical Professional Counselor (Illinois)	03/31/2013
	Licensed Professional Clinical Counselor - Supervision Designation (Ohio)	07/21/2013
	Licensed Professional Counselor - Supervision Endorsement (Arkansas)	07/01/2013
	National Certified Counselor	07/31/2017
Holly Nikels Associate Professor	Licensed Clinical Professional Counselor (Illinois)	03/31/2013
Leslie O’Ryan Professor	Licensed Clinical Professional Counselor (Illinois)	03/31/2013
	National Certified Counselor	11/30/2014
Shawn Parmanand Assistant Professor	National Certified Counselor	04/30/2013

## 3. SPO Learning Outcomes for the Program

Program faculty members engage in continuous systematic program evaluation indicating how the student learning outcomes are measured and met including the assessment of student learning and performance on professional identity, professional practice, and program area standards (CACREP, 2009; <http://cacrep.org/doc/2009%20Standards%20with%20cover.pdf>).

- a. Evaluation of the students counseling performance throughout the practicum, including documentation of a formal evaluation after the student completes the practicum. (CACREP, III.F.5)
- b. Evaluation of the students counseling performance throughout internship, including documentation of a formal evaluation after the student completes the internship. (CACREP, III.G.6)
- c. Common core curricular experiences and demonstrated knowledge in professional orientation and ethical practice (CACREP, II.G.1.a-j).
- d. Common core curricular experiences and demonstrated knowledge in social and cultural diversity (CACREP, II.G.2.a-f).
- e. Common core curricular experiences and demonstrated knowledge in human growth and development (CACREP, II.G.3.a-h).
- f. Common core curricular experiences and demonstrated knowledge in career development (CACREP, II.G.4.a-g).
- g. Common core curricular experiences and demonstrated knowledge in helping relationships (CACREP, II.G.5.a-g).



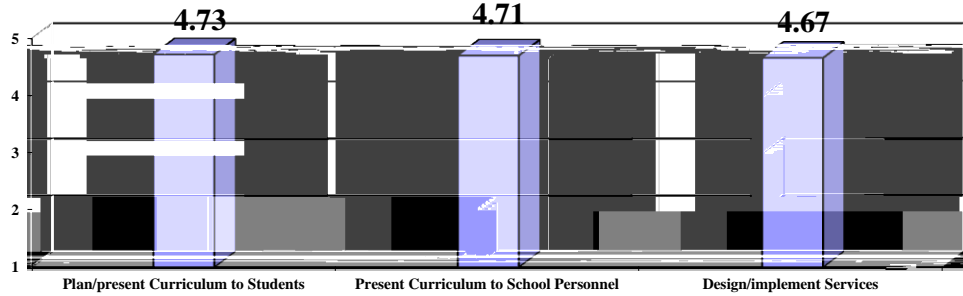
Assessment of Candidate Ability to Plan Instruction

A formal evaluation of student progress at the completion of internship (by the site supervisor) using a likert-type scale (1 = poor; 5 = excellent) is conducted on the following area:



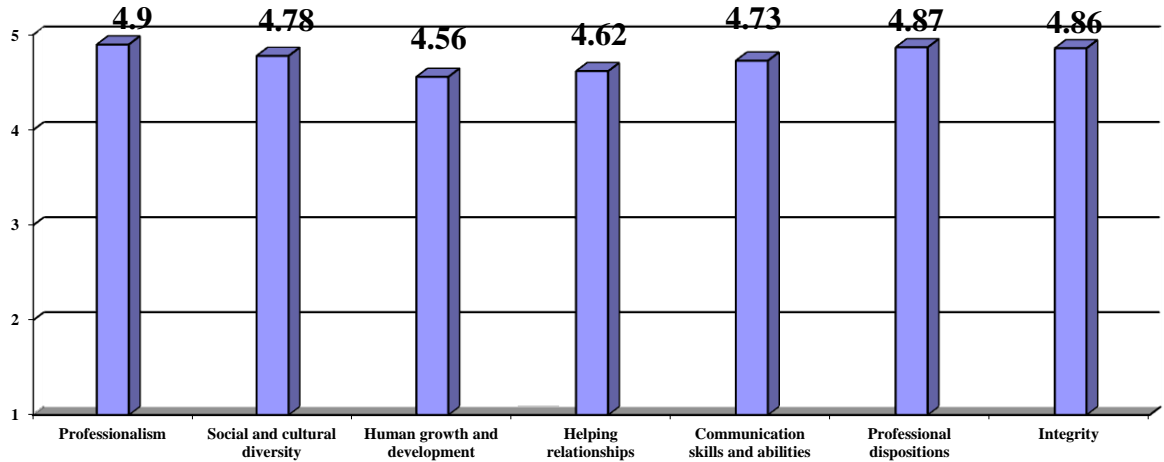


### Comprehensive Counseling and Guidance Program Management



#### The Evaluation of Clinical Practice

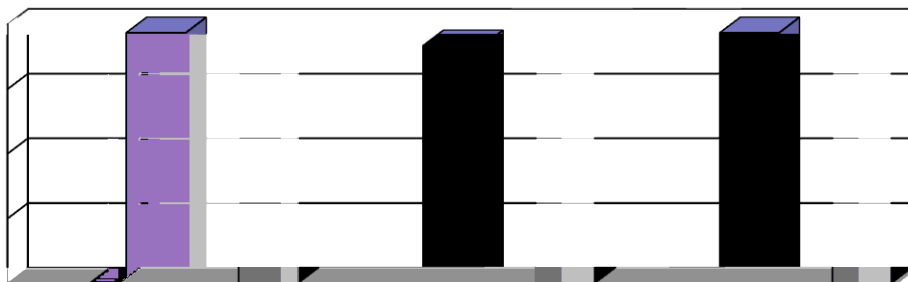
Counseling Practicum Site-Supervisor Evaluation overall results for Fall 2011 indicate that School Counseling students are making good to excellent progress ( $M = 4.76$  on a 1-5 scale). Results for the seven (7) evaluation areas also show students are making good to excellent progress.



Counseling Internship Site-Supervisor Evaluation overall results for Spring 2012 indicate that School Counseling students are making good to excellent progress ( $M = 4.81$  on a 1-5 scale). Results for the six (6) evaluation areas also show students are making good to excellent progress.







## 6. Feedback Related to Changes Planned (or Already Implemented) in Reaction to the 2011-2012 Assessment of Student Learning Data and Long Term Changes Implemented as a Result of 2010-2011 Assessment of Student Learning Data

### State Licensure Examinations of Content Knowledge

Given that the 2011-2012 Illinois certification test results for our School Counseling students were consistent with state averages we intend to ensure that we maintain the quality of our student preparation for program areas standards. This Illinois certification test was included in the 2009-2010 and 2010-2011 Assessment of Student Learning Data and results at that time were consistent with this administration of the Illinois certification test.

### Additional Assessment of Content Knowledge

Given that the 2011-2012 preparation evaluation results fell between the national exit and national non-exit exam total mean we intend to ensure that we maintain the quality of our student preparation for program area standards as well as continue to provide study sessions to help students prepare as effectively as possible. This preparation evaluation was included in the 2009-2010 and 2010-2011 Assessment of Student Learning Data and results at that time were consistent with this administration of the preparation evaluation. This is the 3<sup>rd</sup> time this preparation evaluation was administered to CNED internship students. We have used these results for informational purposes only but intent to use this preparation evaluation as an exit exam beginning with students admitted under the 2011-2012 catalog. As such, we need to ensure that our students are aware of what impact scores more than 1.5 SD below the mean would have on their eligibility to graduate. We have drafted a Comprehensive Exam Policy (see [wiu.edu/counselored](http://wiu.edu/counselored)) and all students have been informed of this policy via the CNED listserv.

### Assessment of Candidate Ability to Plan Instruction

Given that the 2011-2012 internship evaluation of comprehensive counseling and guidance program management resulted in the good to excellent range, we intend to ensure that we

