

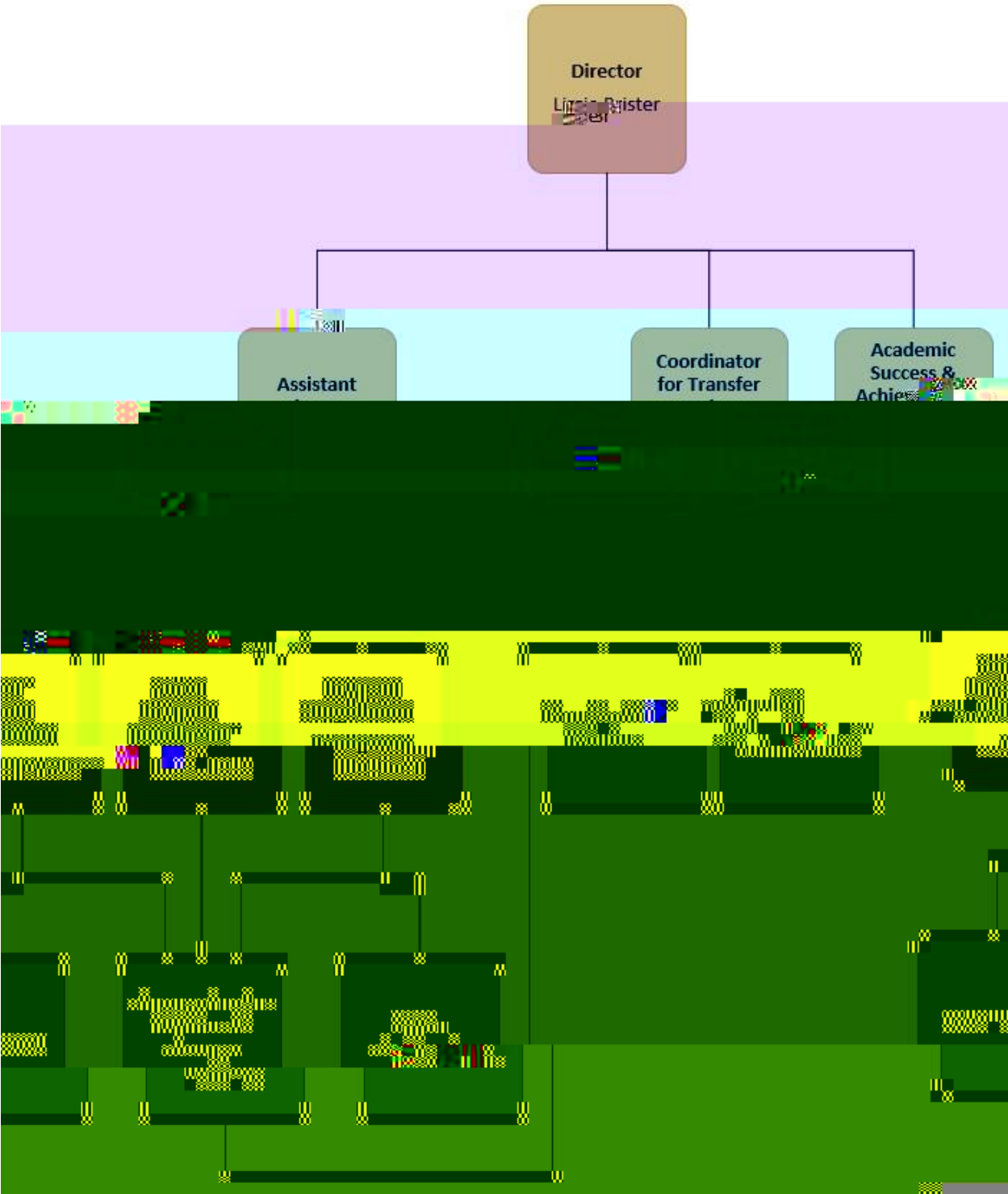
orientation program (CU Explore) as an additional option for a small group

- Participate in virtual

Compensation will be paid hourly, at a rate of \$22/hr, with an expected total for the full 11 weeks of approximately \$5200.

Additional compensation will include a 40-meal block meal plan, housing in a private bedroom in an apartment shared with other CU Boulder intern(s), access to the Rec Center, and parking near housing location, if needed.

NSFP can help to connect NODA Intern with other Student Affairs or academic offices pertaining to the intern's career interests for conversations or shadowing. Options may include offices such as Center for Inclusion and Social Change, Career Services, Academic Advising, Off-Campus Housing and Neighborhood Relations, SA Communication and Marketing, or SA Planning, Assessment and Data Analytics.



The Journey Leader program is entering its seventh year. Journey Leaders (JLs) are seasonal support staff, employed during high programmatic times—primarily through Fall Welcome, but also supporting summer programs, Family Weekend, JL recruitment, and Spring Welcome. Journey Leader Mentors (JLMs) are returning JLs who have applied to and been selected for the JLM position, which provides year-round employment and a higher-level leadership role within the team.

All new JLs enroll in a

Department of Leadership & Professional Studies / C2_114f2.15 Months 03600530055004C0

Shelby County Community College

- Create facilitation guides for JL-led programs and activities, such as Fall Welcome small group meetups
- Assist the Coordinators with preparation for upcoming events and programs

The four NSFP Coordinators each supervise 2 JLMs.

- Matriculation for Summer and Fall students
- Online Experience launches
- Family webinars and coffee hours
- JLMs begin summer engagement initiatives with JLS
- Summer program & d initiatives begin
 - Training f

\O 7 P D (" J E % E , 0 \

- College Day
 - CU Kickoff
 - Spirit Night
 - WelcomeFest
 - Be Involved Fair
 - CUnity Fest
- Buff Meetups
- Family Programs
 - Family welcome tents
 - Letters from Home
 - Navigating the Transition

NSFP serves as the central hub for Fall Welcome Signature Events, though many are planned by or in collaboration with other campus offices, including the academic colleges, Center for Student Involvement, Athletics, Advancement, and the Center for Inclusion and Social Change.

- Academic Success & Achievement Program Tutoring (year-round)
- Transfer Buffs LLC (August through May)
- Academic Success Conference (September/October)
- Family Weekend (October)
- National Transfer Student Week (October)
- Spring Welcome (January)
- Family Day (February)
- Marinus Smith Awards (April)
- Taste of Home (April)